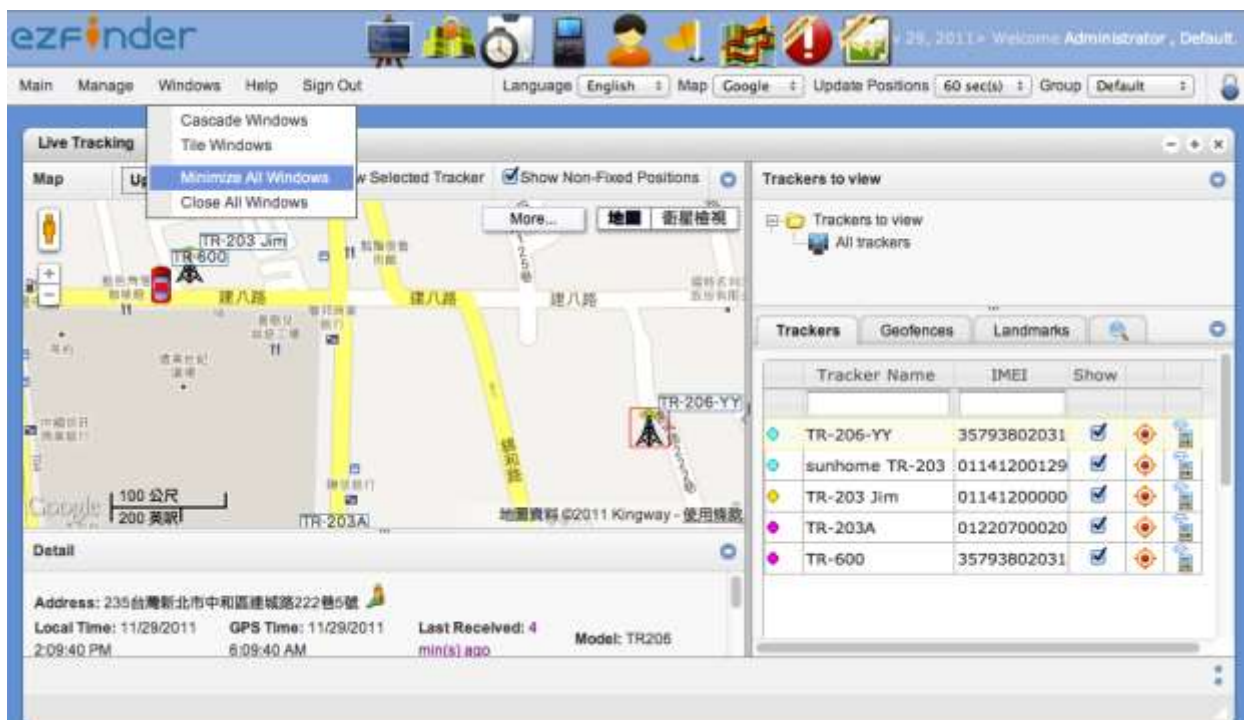


# ezfinder Account Creation Guide for LoRa Trackers

Version 1.0



# INDEX

1. SYSTEM REQUIREMENTS	3
2. TRACKING DEVICE	3
3. ACCOUNT CREATION	4
4. CREATION ACCOUNT STEP	5
4.1) Step 1. User Information	5
4.2) Step 2. Tracker Information	5
4.3) Step 3. Complete the account set up	7

# 1. SYSTEM REQUIREMENTS

- Internet connection (High speed recommended).
- Supported Web Browsers: Google Chrome, Mozilla Firefox, Apple Safari, Internet Explorer. Please use the latest versions of these web browsers. For optimal viewing, Google Chrome or Mozilla Firefox is recommended.

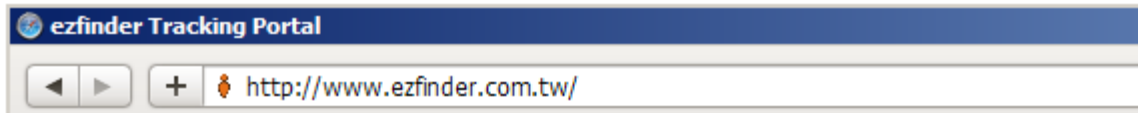
# 2. TRACKING DEVICE

Before accessing the ezfinder service, please make sure that:

- Your tracker is eligible for the ezfinder service. Confirm with vendor.
- The battery of your tracker is fully charged.
- Your tracker is turned ON.

### 3. ACCOUNT CREATION

- Open your web browser and type in the following address into the address bar :  
www.ezfinder.com.tw



- Register for a new account by clicking on “Register for an account”.



#### A new, easy-to-use GPS tracking platform

Different screens available. Each account can contain multiple trackers. Supports most common web-browsers.



No special software required. You can simply use a compatible web-browser.



[Features](#) | [Demo](#)

#### Sign in

Language

English

User ID or Email

Password

[-> Login](#)

[Register for an account](#)

[Forgot Password?](#)

[Registration Guide](#) | [Contact Us](#)

Copyright © 2011-2012 www.ezfinder.com.tw All Rights Reserved

- Carefully read the Agreement.
- If you do not accept all the terms of the Agreement, click on “Cancel”. You must not use ezfinder if you do not accept the Agreement in its entirety.
- If you accept the terms of the Agreement, check the “I Agree” box.
- Once you check the “I Agree” box, the “Continue” button (which was grayed out) will appear and become clickable. Click on the “Continue” button.
- After clicking on the “Continue” button to Creation Account Step by Step.

## 4. CREATION ACCOUNT STEP

### 4.1) Step 1. User Information

- you will be asked to create an account by submitting some information. All fields marked with a red asterisk (\*) are mandatory.
- You can select your language of preference from the drop down list.
- After you have entered all the required information, click on “Next” to Step 2.

The screenshot shows the 'Create Account' form on the ezfinder website. The form is titled 'User Information' and contains several input fields. The fields are: Language (dropdown menu set to English), User ID (text field with 'NL212'), Email (text field with 'arthur7@yahoo.com.tw'), Confirm Email (text field with 'arthur7@yahoo.com.tw'), Password (text field with masked characters), Confirm Password (text field with masked characters), First Name (text field with 'Cheng'), Last Name (text field with 'Joshua'), Contact Phone Number (text field with '0933189107'), Contact Phone Number 2 (text field with '1982373147'), Address (text field with 'ZEN-AI ROAD'), City (text field with 'Taipei'), Province / State (text field with 'Taiwan'), Postal Code (text field with '111'), and Country (text field with 'Taipei'). There are green checkmarks next to the User ID and Email fields. A red asterisk (\*) is present next to the fields for Email, Password, Confirm Password, First Name, Last Name, and Contact Phone Number. A red text message says 'Important: Remember your user ID and password.' There is a blue question mark icon in the bottom right corner of the form. Below the form is a navigation bar with four steps: Step 1 (User Information), Step 2 (Tracker Information), Step 3 (Confirm SIM Card Number), and Step 4 (Account Creation). The 'Next >' button is highlighted. The copyright notice at the bottom reads: 'Copyright © 2011-2015 www.ezfinder.com.tw All Rights Reserved.'

### 4.2) Step 2. Tracker Information

- Complete the fields and make the appropriate selections from the drop down lists.
- Please select your Device Model and input LoRa MAC Address/ Serial Number / Tracker Name Information. All fields marked with a red asterisk (\*) are mandatory.
- If you have any questions in the input data, move your mouse to Symbols there will be instructions.
- After you have entered all the required information, click on “Next” and then the account is created, if you need to change user information, click on “Previous”.

Create Account

**Tracker Information**

Model	<input type="text" value="NL-T212"/>
LoRa Mac*	<input type="text"/>
Serial Number*	<input type="text"/>
Tracker Name*	<input type="text"/>
Description	<input type="text"/>
Time Zone	<input type="text" value="Taipei (GMT+08:00)"/>
Icon	<input type="text" value="Default"/>



- Step1  
User Information
- Step2  
Tracker Information**
- Step3  
Confirm SIM Card Number
- Step4  
Account Creation

### 4.3) Step 3. Complete the account set up

Please click on 'Continue'. Then the account is created.



Create Account

**Account Creation**

 **Your account has been created.**  
Please click on 'Continue' to configure your tracker.

**Step1**    **Step2**    **Step3**    **Step4**  
User Information    Tracker Information    Confirm SIM Card Number    Account Creation

Copyright © 2011-2015 www.ezfinder.com.tw All Rights Reserved.